

A LOCAL STORY

Putting a Spotlight on Poverty

When Helen Hudson speaks, her voice has been known to send waves across Syracuse. She has long been an advocate for people that have been suppressed and go unheard, particularly those living in poverty.

Hudson knows what it's like to try to keep afloat, too. As a single mother caring for her son at the time, she was faced with making crucial life decisions on a daily basis while being paycheck to paycheck. Do the lights stay on or do you see her feed her son?

"The resources are there," said Hudson. "We have to make sure these folks know they are there. We have to continue to tell our communities they are great, our people are great. We can do it."

LOCAL POVERTY PROBLEMS NEED HOLISTIC, DATA-DRIVEN NEIGHBORHOOD SOLUTIONS

Introduction

There is a lot of talk about how to help people in need, but it's often hard to know where to start. In a paper we wrote for Syracuse University, we explore the challenges and opportunities of using data to help solve these problems. We argue that the most effective way to help people in need is to use data to understand the complex, interconnected nature of poverty in a neighborhood. This means looking at the whole picture, not just the parts. It means using data to identify the root causes of poverty and to develop solutions that address these causes. This means working with the community to develop solutions that are tailored to the needs of the neighborhood. This means using data to measure the impact of these solutions and to make adjustments as needed.

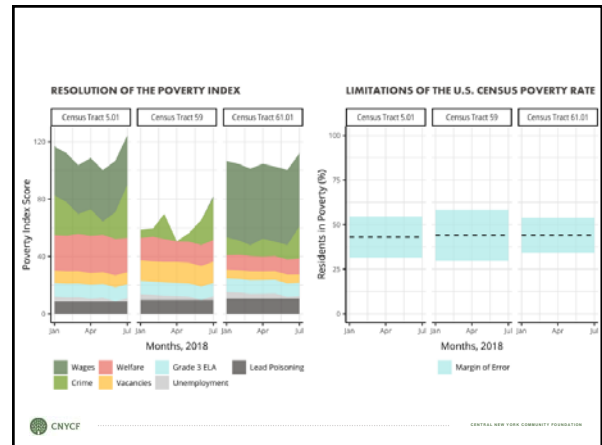
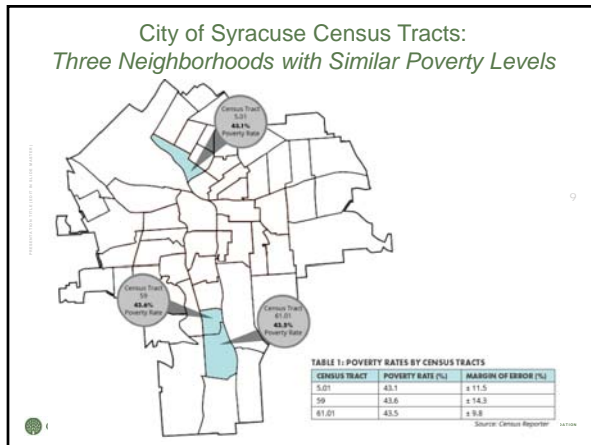
Why Measure Poverty?

Measuring poverty is important because it helps us understand the extent of the problem and the needs of the community. It also helps us identify the causes of poverty and develop solutions that address these causes. Measuring poverty can also help us track progress and evaluate the impact of our efforts.

Geography Matters

Poverty is not evenly distributed across the city. Some neighborhoods are more affected than others. Understanding the geographic distribution of poverty can help us identify the most vulnerable areas and develop targeted solutions for these areas.

Written by Helen Hudson, Vice President, Community Engagement; James Crawford, MBA, Data Science Consultant



Central New York Community Foundation

- **Communications**
 - To convey our expertise and community knowledge (see series of articles, blogs and white papers)
- **Grant Making**
 - For more robust due diligence (part of application)
- **Initiative Development**
 - To select initiatives (Initiatives Ranking Rubric)
- **Capacity Building**
 - Results Based Accountability for nonprofits and CI-PM integration (Performance Management Learning Community)
- **Community Building**
 - Community Data Group (Friday Data Group)

Community Grant Application

CENTRAL NEW YORK COMMUNITY FOUNDATION

433 East Fayette Street, Suite 300 • Syracuse, NY 13202 • 315-422-8538 • www.cnycf.org

THE FUNDING REQUEST

Please describe the proposed project addressing the following:

Part One: Need Statement and Outcome Measurement


1. Describe the need that your project is addressing. (1,000 characters)
 - Project(Need)
2. How was the need identified? Please cite the source of appropriate statistics. You may wish to refer to cnyfacts.org. (1,000 characters)
 - Need(Identified)
3. Why is your agency best suited to address this need? (750 characters)
 - Agency(BestSuited)
4. How does this project relate to other programs and projects your organization is currently engaged in? (500 characters)
 - Project(Related)
5. How will this project contribute to community building (refer to definition in the application guidelines) (500 characters)
 - Community(Building)

Part Two: Program Description

Central New York Community Foundation

- **Communications**
 - To convey our expertise and community knowledge (see series of articles, blogs and white papers)
- **Grant Making**
 - For more robust due diligence (part of application)
- **Initiative Development**
 - To select initiatives (Initiatives Ranking Rubric)
- **Capacity Building**
 - Results Based Accountability for nonprofits and CI-PM integration (Performance Management Learning Community)
- **Community Building**
 - Community Data Group (Friday Data Group)

13



CENTRAL NEW YORK COMMUNITY FOUNDATION

Initiatives Ranking Rubric


Issue Area	Responsive		Community Leadership		Impact		# of Citations Met	CNYF Web Link
	Documented Community Need	Relevant to & Broad Part of the Community	Community Interest/ Momentum	Strengths We Have are relevant	Acceptable Measurement of Risk	Ability to Define and Measure Success		
Lead Poisoning								
College Attainment								
Community Literacy								
Healthy Homes								
Poverty								
Early Childhood Development								
Trauma Informed Care								
Ethnic/Racial Disparities (IFW)								
Arts & Culture								
Sustainability								

Page 1

Central New York Community Foundation

- **Communications**
 - To convey our expertise and community knowledge (see series of articles, blogs and white papers)
- **Grant Making**
 - For more robust due diligence (part of application)
- **Initiative Development**
 - To select initiatives (Initiatives Ranking Rubric)
- **Capacity Building**
 - Results Based Accountability for nonprofits and CI-PM integration (Performance Management Learning Community)
- **Community Building**
 - Community Data Group (Friday Data Group)

15




CENTRAL NEW YORK COMMUNITY FOUNDATION

Central New York Community Foundation

- **Communications**
 - To convey our expertise and community knowledge (see series of articles, blogs and white papers)
- **Grant Making**
 - For more robust due diligence (part of application)
- **Initiative Development**
 - To select initiatives (Initiatives Ranking Rubric)
- **Capacity Building**
 - Results Based Accountability for nonprofits and CI-PM integration (Performance Management Learning Community)
- **Community Building**
 - Community Data Group (Friday Data Group)


16




CENTRAL NEW YORK COMMUNITY FOUNDATION

Community Data Group

17




CENTRAL NEW YORK COMMUNITY FOUNDATION



CENTRAL NEW YORK COMMUNITY FOUNDATION

Questions: Frank Ridzi (fridzi@cnycf.org)



© 2019 CENTRAL NEW YORK COMMUNITY FOUNDATION