

RESILIENT PLANNING IN POLITICAL DIVISIVE COMMUNITIES

**STEPHEN BUCKMAN
CLEMSON UNIVERSITY
COMMUNITY INDICATORS IMPACT SUMMIT
DENVER COLORADO
OCTOBER 11, 2019**





WHERE WE DROP THE BALL

- We do a great job of talking about resiliency but not how to get it done
- Next Portland (Portlandia): Maybe not
- We are a suburban country
- Don't tell me what I can or cannot do with my dirt
- How do we work folks of this nature?



STRUCTURE

- The issues
- The Study
- Scenario Planning
- What we learned



SORTING



- Balkanized communities are the norm
- People have the economic opportunity to reorder their lives around their beliefs, values, and tastes
 - Want to live with the like minded
 - Echo-chamber
 - Fox News, MSNBC, ETC
- Place matters
- New societies are being created without a plan or understanding of the consequences

CLIMATE CHANGE?

- The public understanding of climate change is not a lack of adequate info but is the intentional avoidance of that info
 - Political affiliation is the largest factor for the belief in climate change
 - Bounded Rationality
 - Words matter
- Environmental problems are also behavioral and cultural
 - Worldviews (Yale Study and our follow up study)
 - Religion: My colleague

AGENDA 21

- Nonbinding UN Resolution
 - Calls for holistic sustainability efforts
 - Rio Summit 1992
 - 350 page document
- Chief villains: APA and ICLEI
 - “No Agenda 21” directs its opposition to regional planning and associated unelected boards who are seen as unconstitutional
- Worldviews
- Density=poverty in many of the eyes of the Tea Party and Anti-Agenda 21 crowd
 - Stack and pack housing
- Agenda 21 is an attack on the middle class



YIKES THIS IS NOT GOOD. WHAT CAN WE DO? (THINK HABERMAS AND FORESTER)

- Power is big issue to consider
 - Power is about respect, recognition, and listening
- Know your audience
 - History and social conditions of the audience
- Language matters
 - Triangle that involves: speaker, hearer, and world
 - The narrative is important
 - What gets done depends on what is said, and how it is said, and to/by whom
- You are as much there to learn as you are to preach

REHABBING, RECOUPLING, AND RETROFITTING GREAT LAKES SHORELANDS (PROJECT)

- Resilient master planning of shoreland communities on Lake Michigan
- Must prove that resiliency and for that matter climate change planning is important
- Communities: Ludington, St Joe, and Grand Haven
- Combined effort between LIAA, UM, Mich Tech
 - Fiscal impact, shorelands, wetlands, fishes, and planning
 - Non-Profit planning firm



ISSUES WE FACED

- Understanding the community
- The Narrative
 - Climate Change: Change the frame of reference to Global Weirding
 - Dialogue between people and officials
- Agenda 21
 - Police Presence
 - Ludington Torch

LUDINGTON TORCH: TRUST ME



- The next speaker, Richard Norton, Ph.D., offered [some of what he had in the past](#), but he seemed more dodgy about things this time. Dr. Norton offered some of his views on two topics: an oblique overview of his urban planning studies and the powers and authority inherent in an area's planning commissions. Of everyone associated with LIAA, he is likely to be the most threatening, since he tells these planning commissions and governing bodies that they have powers greater than the rights of the individuals they supposedly serve. It's a dangerous concept, and is the gist behind what the whole effort by LIAA and its donors is about.

WORKING WITH THE COMMUNITY

- Lead with economy not environment
- Global Weirding vs Climate Change
- Images
 - Build out
 - Flooding inundation
- Community Action Teams
- Scenario Planning
 - Its all about choice

CATS (COMMUNITY ACTION TEAMS)

- It's a way to empower the community
- The community comes up with the issues and how to solve them
- Three step process
 - Define issues broadly
 - Narrow down three or so key issues
 - How they can be solve and by whom

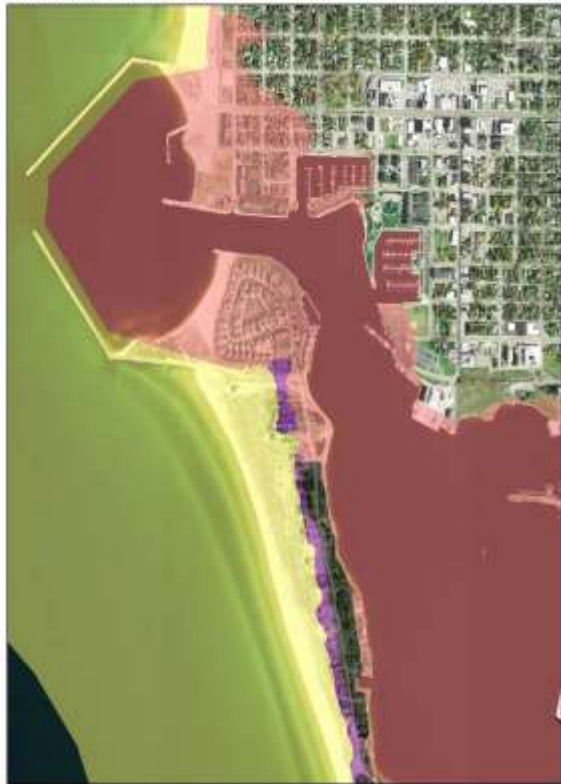


CLIMATE DESCRIPTION

Downtown Ludington - "Lucky" Condition Draft (Low-Vulnerability)



Downtown Ludington - "Likely" Condition Draft (Med-Vulnerability)



Downtown Ludington - "Perfect Storm" Draft (High-Vulnerability)



SCENARIO PLANNING

	Lucky Climate Future	Expected Climate Future	Perfect Storm Future
Current Mgmt. Practices	A1	A2	A3
Under a Full Build Out	B1	B2	B3
Under Best Management Practices	C1	C2	C3

WHAT WE DID TO SUCCEED AND WHAT WE LEARNED

- Mirrored the literature
- Understood our community
- Controlled the narrative
- Gave the community the power
- Biggie: Lead with what is important to them in this case economics

Stephen Buckman PhD
Clemson University, USA
Assistant Professor
City Planning and Real Estate Development
1 North Main Street, Greenville, SC 29601
Email: stbuckm@clemson.edu

